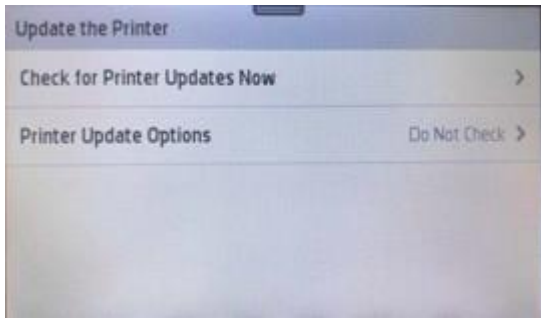
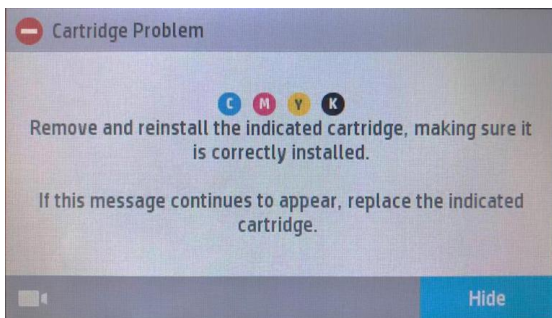


Turn Off Firmware Upgrade Instruction [20190412]

Recently, it was found that the HP952/953/954/955 series printer prompted: "WIFI detects the new firmware version, whether it is updated" on Apr 9, 2019. Printer interface as below:



Do not "Update the Printer" to the latest firmware version, it will result in the below error:


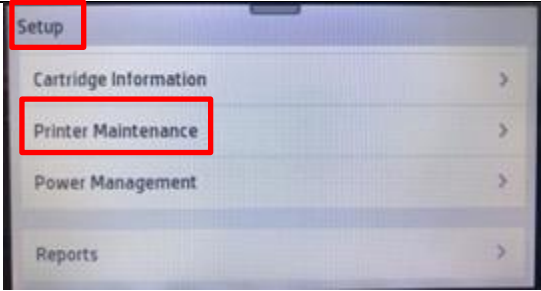

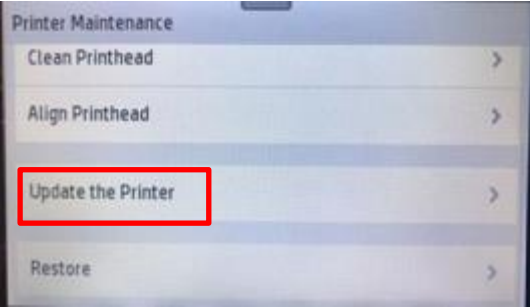
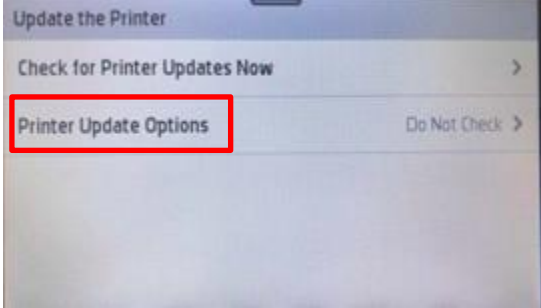
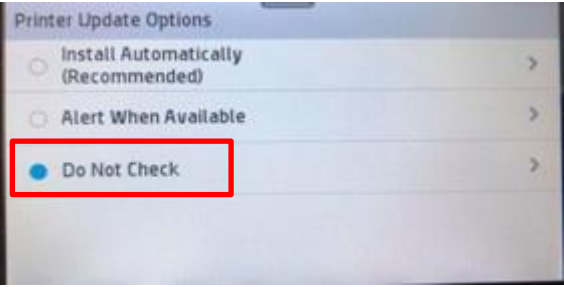
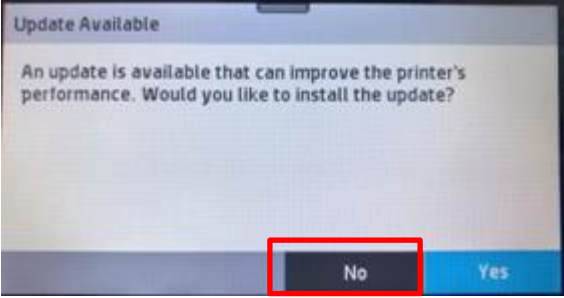


This prompt indicates that your compatible or remanufactured cartridge can not be recognized by printers, so please click "NO" to stop the update of the printer.

The instructions below will allow you to turn off automatic firmware updates:

Turn Off Firmware Upgrade Instruction [20190412]

How to turn off the printer from detecting the firmware automatically

	
<p>Step1 : On the printer control panel, swipe down to open the Dashboard, and then touch the Setup icon </p>	<p>Step2 : Swipe up on the display, and then touch “Printer Maintenance”</p>
	
<p>Step3:Swipe up on the display, and then touch “ Update the printer”</p>	<p>Step4:Touch” Printer update Options”</p>
	
<p>Step5:click the “Do not check”</p>	<p>Step6:click “No” to cancel the update</p>