

Operating Instruction of Firmware Downgrade for HP 952 Series Printers

1. Printer Model List

Printer Series	Model	Current Firmware Version	Downgrade to Firmware Version
8210 series	8210	1914A	1834A
	8216		
	8218		
8710 series	8710	1910AR	1848A
	8715		
	8718		
8720 series	8720	1910AR	1848A
	8725		
	8728		
8730/8740 series	8730	1912B	1903B
	8740		
	8745		
7720 series	7720	1909B	1851A
7730 series	7730	1909B	1851A
7740 series	7740	1912A	1849A
8702	1828A(no new firmware available)		

Note: Please choose the indicated software to downgrade the firmware according to its printer model and current firmware version.

2. Notices for Firmware Downgrading

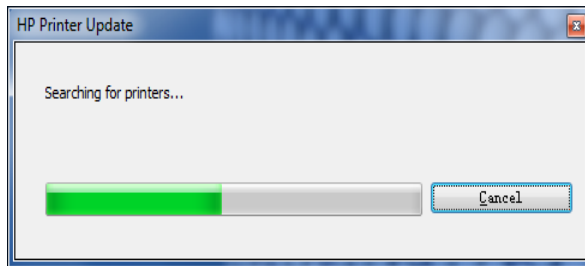
2.1 Make sure the printer is in normal printing status, in which the firmware can be downgraded properly.

2.2 Ensure turning off Automatically Update Check for printer before start to downgrade.

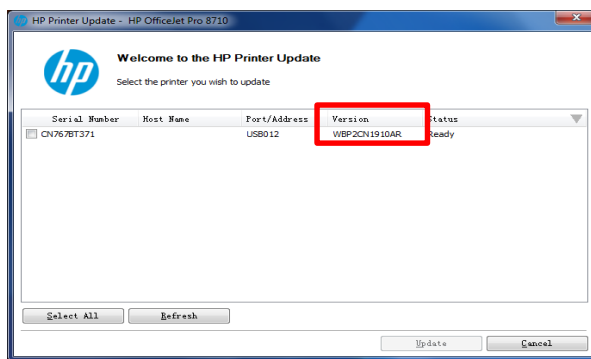
2.3 Risks on downgrade failure exist as OEM releases a newer firmware version beyond the Model List.

3. Operating Instruction

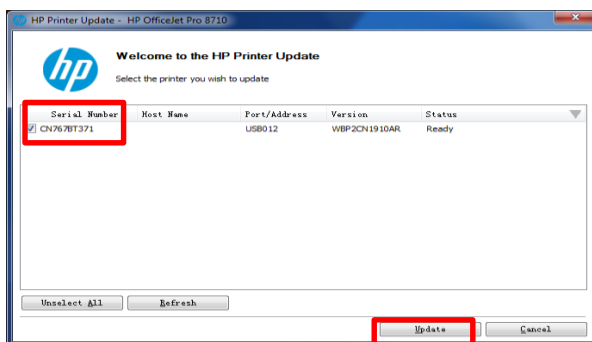
3.1 As the printer is installed and connected to the computer with USB cable, open the firmware downgrade software for HP 952 series.



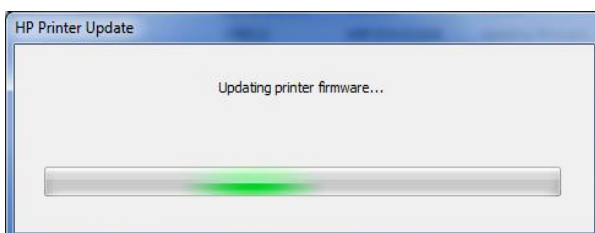
3.2 When the printer is detected, there will a update notice shown as below in the computer (take HP 8710 as an example)



3.3 Choose the printer that need to be downgraded and click "Update" (take HP 8710 as an example)

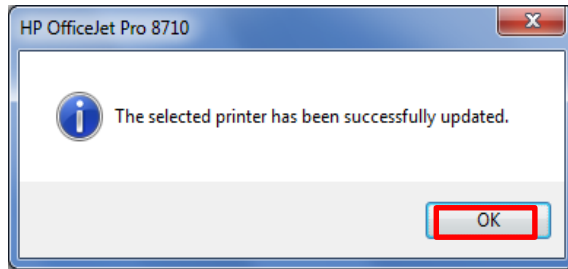


3.4 As the printer is downgrading, notices as below are shown in the computer and the printer's control panel (take HP 8710 as an example)





3.5 After the above step is completed, please click OK (take HP 8710 as an example)



3.6 The firmware version after downgraded will be shown as below

